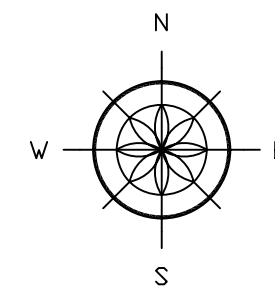
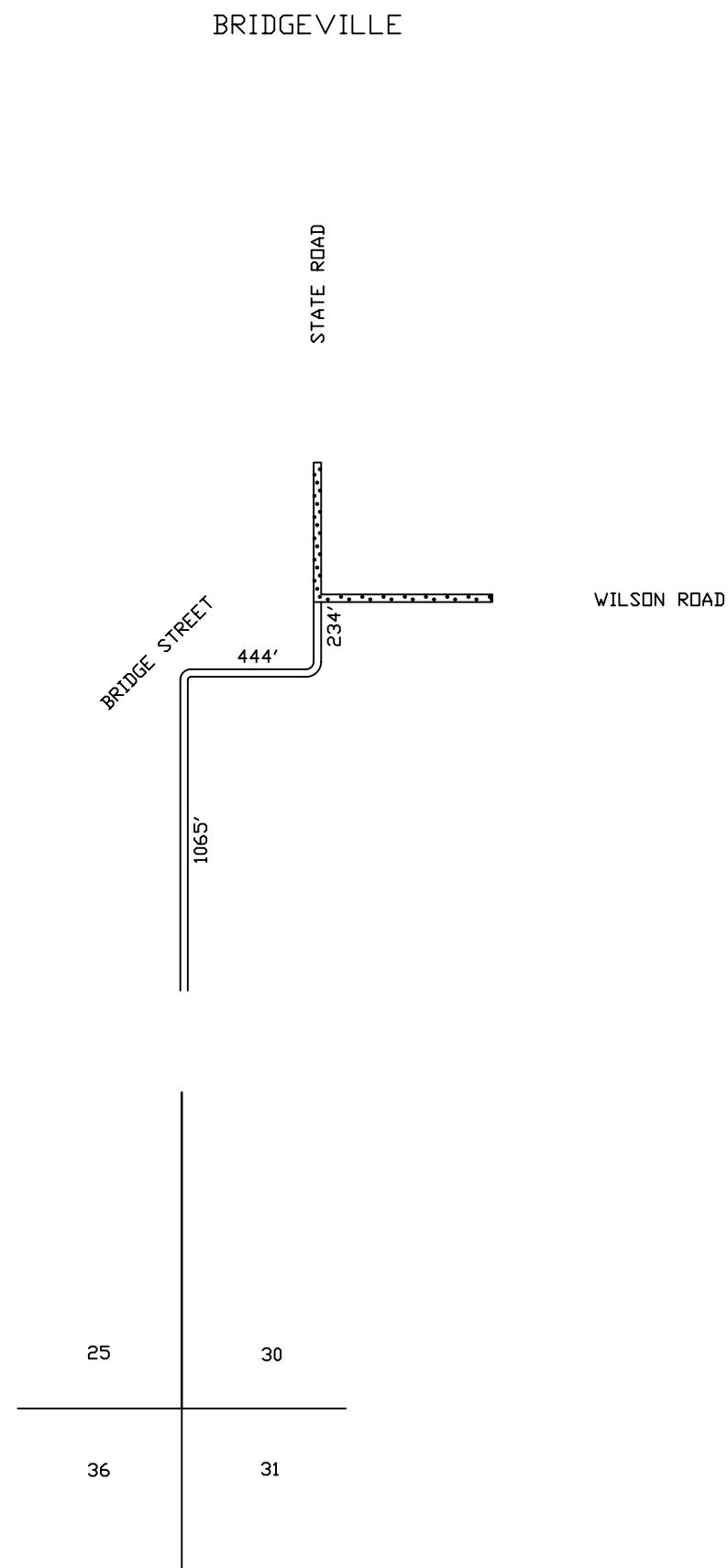


LEGEND

- COUNTY LINE -----
- CORPORATE LIMITS -.-.-.-.-
- STATE TRUNKLINE =====
- COUNTY PRIMARY -----
- ADJACENT COUNTY -----
- CITY OR VILLAGE STREET =====

LOCAL ROAD SYSTEM TOTAL FEET 1743' EQUALS 0.33 MILES



SCALE



ONE INCH EQUALS 600 FEET

GRATIOT COUNTY - COUNTY #29

TOWNSHIP WASHINGTON

SECTION 30

T 9 N R 2 W