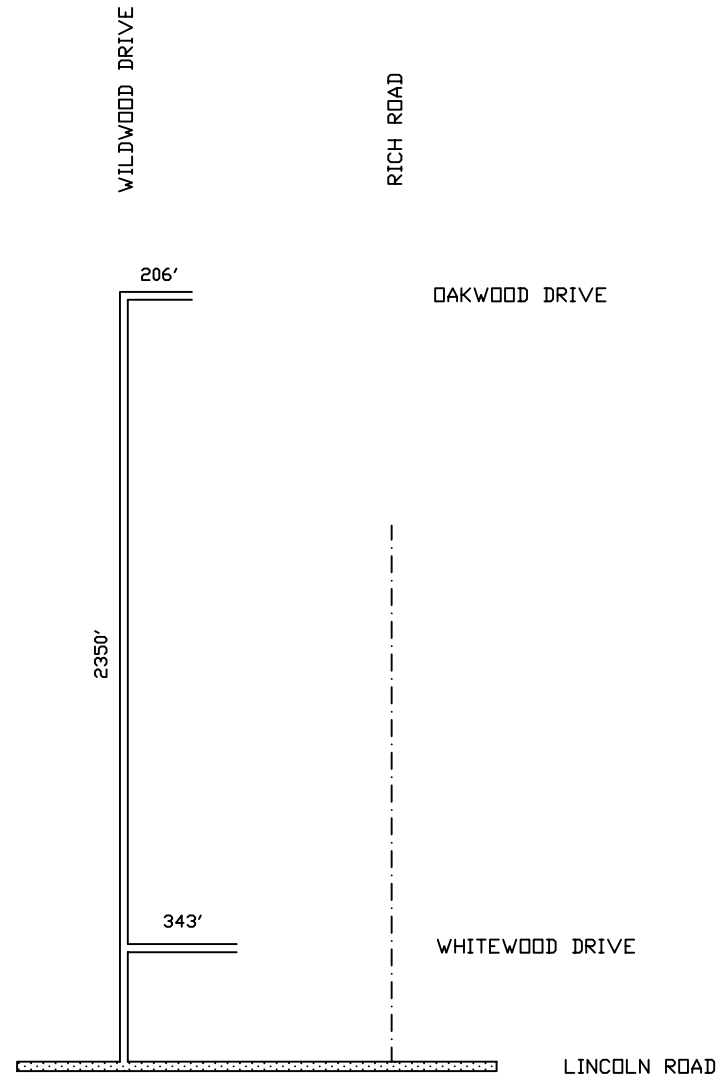


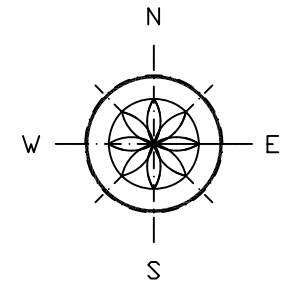
LINCOLN MANOR ESTATES No. 1



LEGEND

COUNTY LINE	-----
CORPORATE LIMITS	- . - . - . -
STATE TRUNKLINE	=====
COUNTY PRIMARY	=====
ADJACENT COUNTY	=====
CITY OR VILLAGE STREET	=====

LOCAL ROAD SYSTEM TOTAL FEET 2899' EQUALS 0.55 MILES



SCALE



ONE INCH EQUALS 600 FEET

GRATIOT COUNTY - COUNTY #29

TOWNSHIP SEVILLE

SECTION 36

T 12 N R 4 W