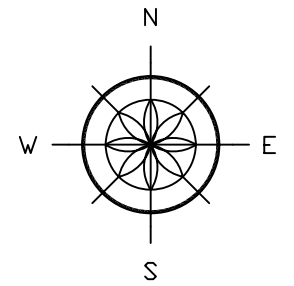


LEGEND

COUNTY LINE	-----
CORPORATE LIMITS	- . - . - . - . - . - . - . - . - .
STATE TRUNKLINE	=====
COUNTY PRIMARY	===== ===== =====
ADJACENT COUNTY	===== ===== =====
CITY OR VILLAGE STREET	===== =====

LOCAL ROAD SYSTEM TOTAL FEET 370' EQUALS 0.07 MILES



SCALE



ONE INCH EQUALS 600 FEET

GRATIOT COUNTY - COUNTY #29

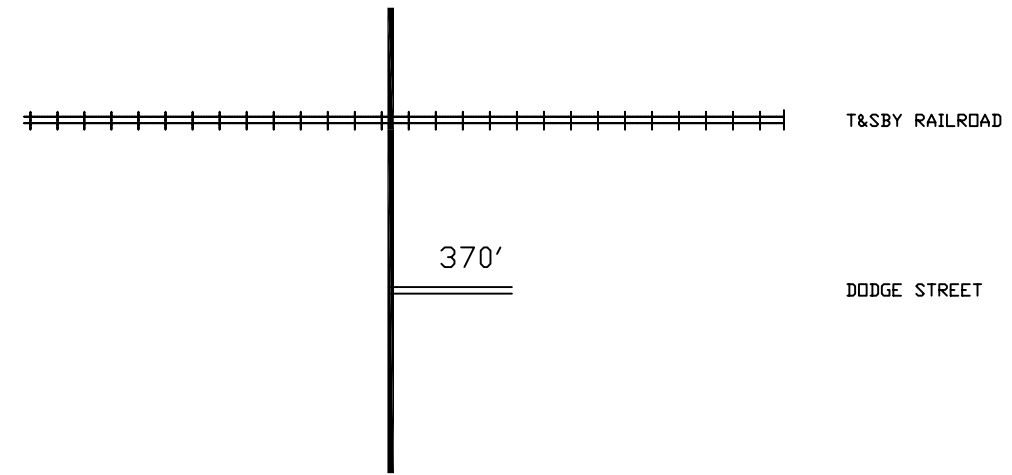
TOWNSHIP WASHINGTON

SECTION 9

T 9 N R 2 W

OLA

US 127  
(BAGLEY ROAD)



T&SBY RAILROAD

DODGE STREET

370'