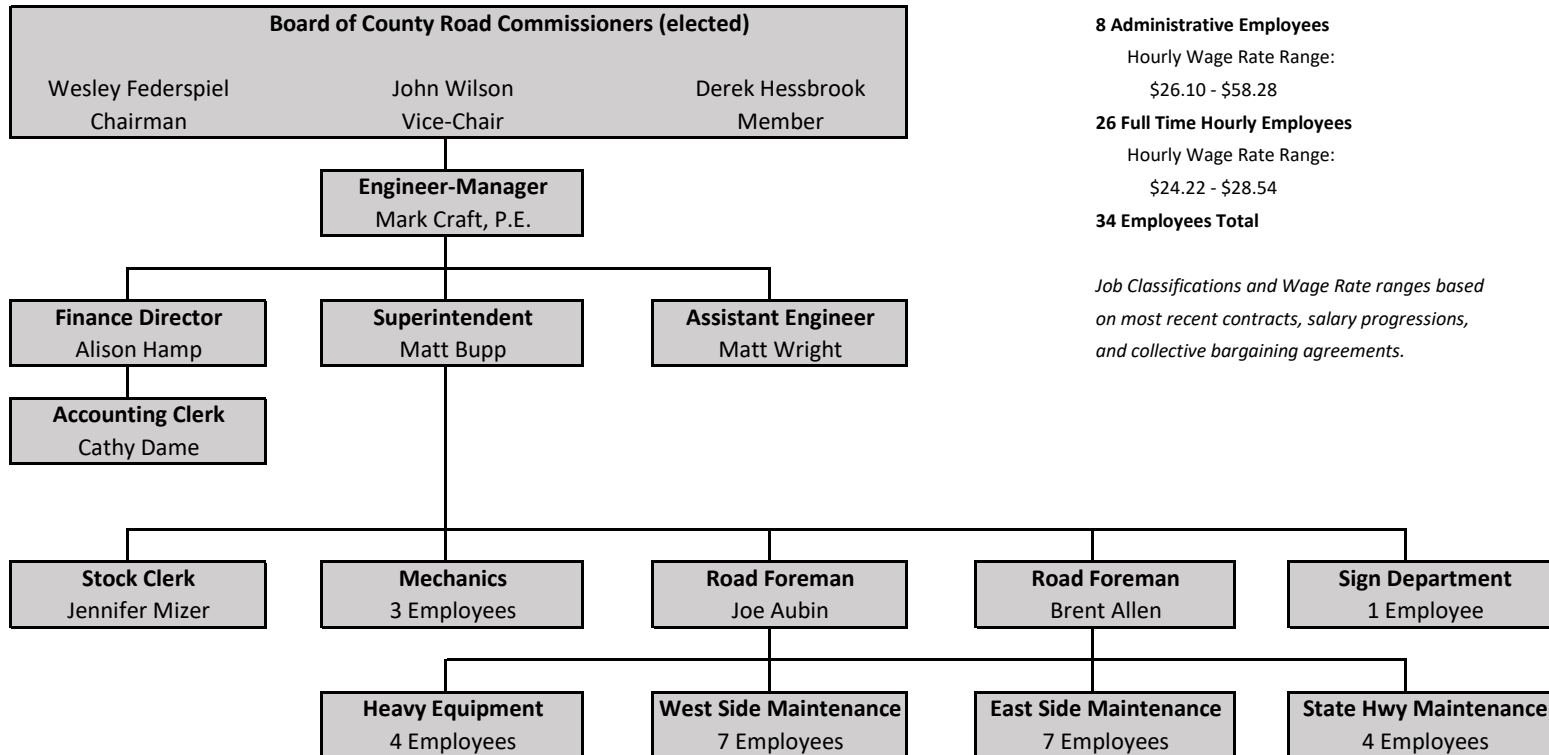


Gratiot County Road Commission - Organizational Chart

January 1, 2023



8 Administrative Employees

Hourly Wage Rate Range:

\$26.10 - \$58.28

26 Full Time Hourly Employees

Hourly Wage Rate Range:

\$24.22 - \$28.54

34 Employees Total

Job Classifications and Wage Rate ranges based on most recent contracts, salary progressions, and collective bargaining agreements.